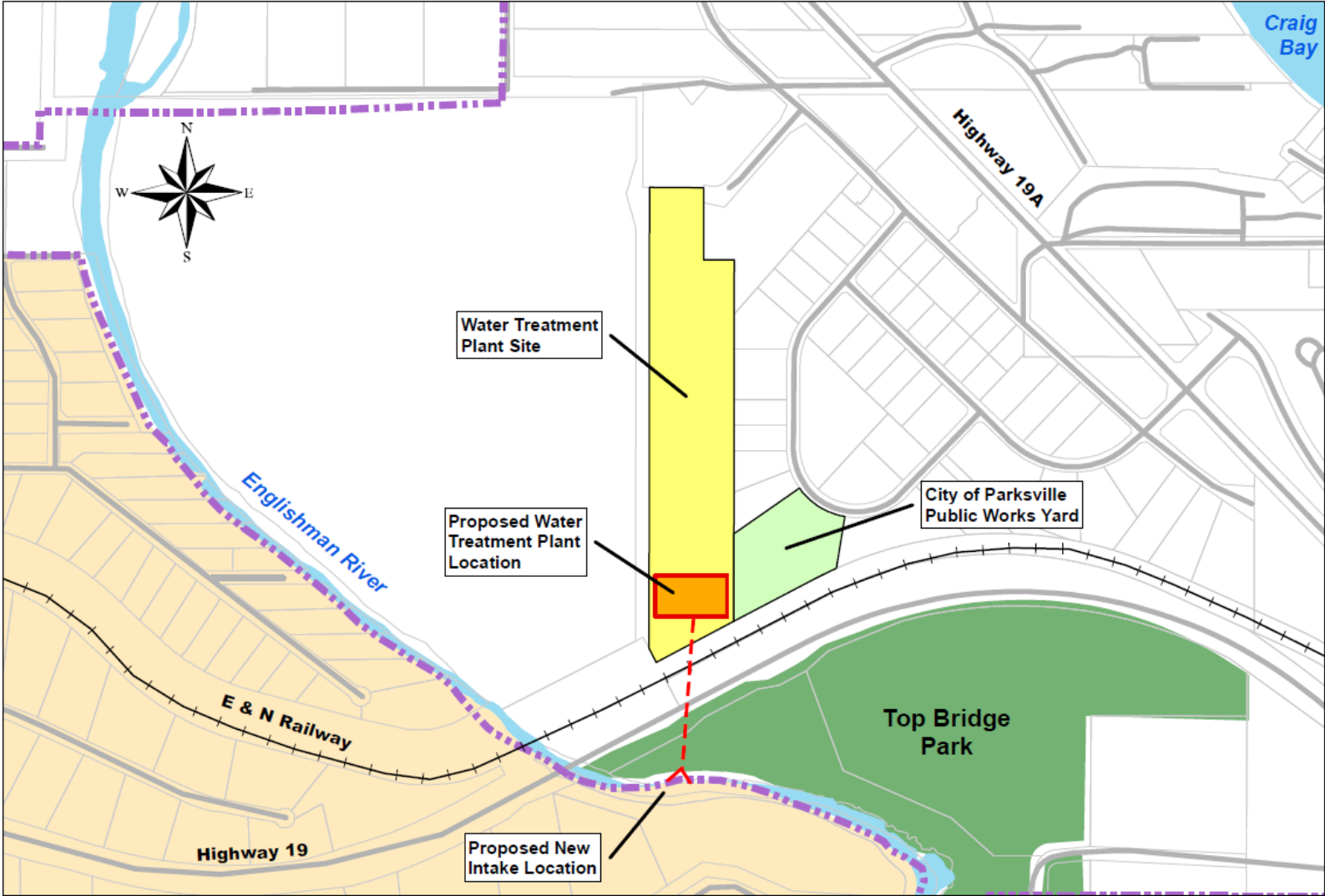




Englishman River Program Status Update

Prepared For:
Englishman River Water Service Management Board
February 22, 2012

Change of Works Application



Proposed Water Treatment Plant



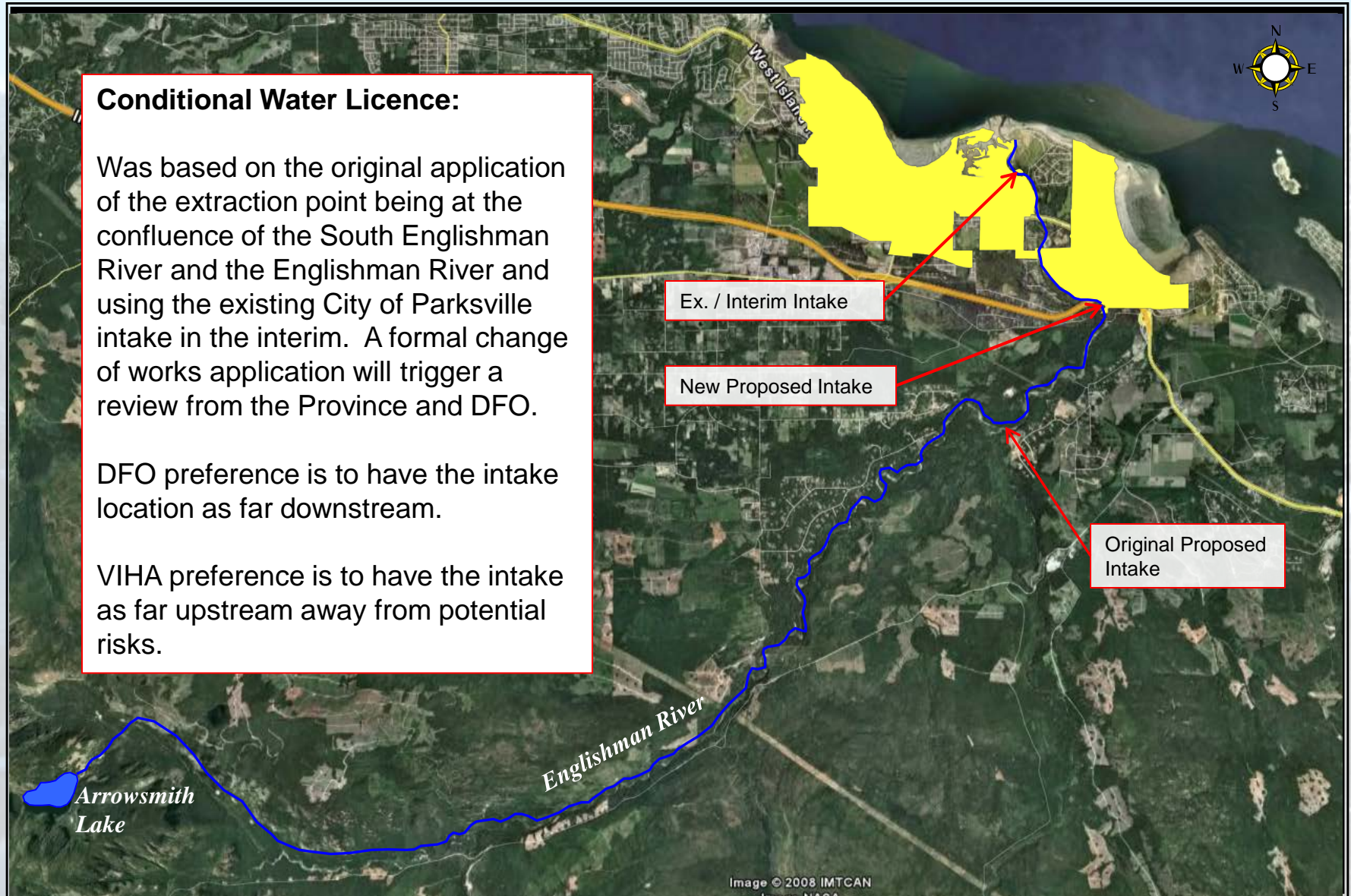
Change of Works Application

Conditional Water Licence:

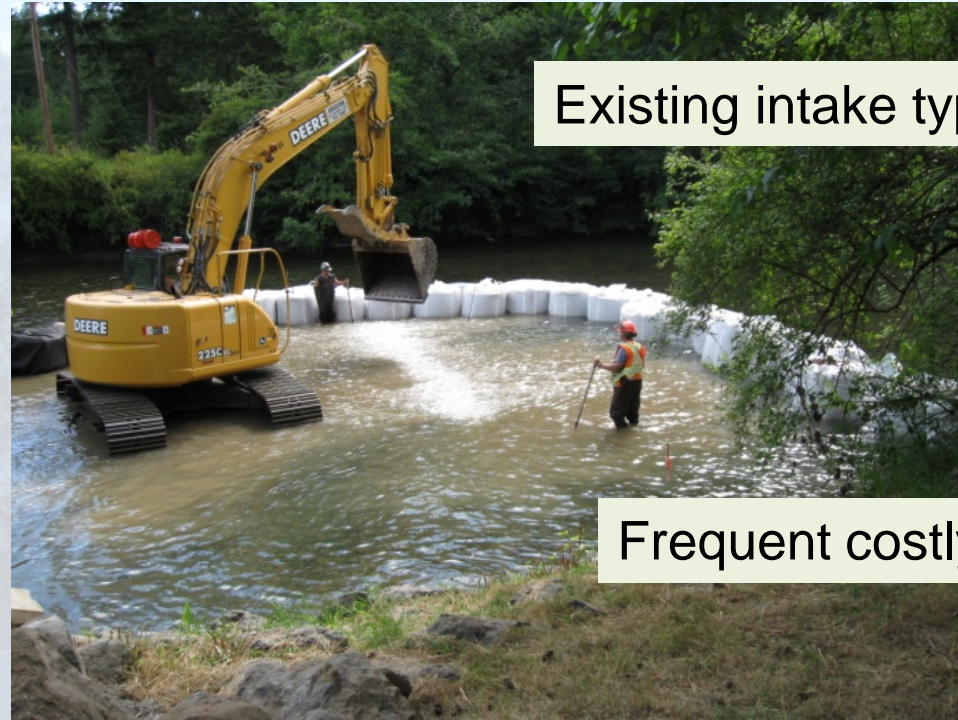
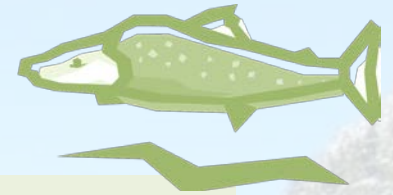
Was based on the original application of the extraction point being at the confluence of the South Englishman River and the Englishman River and using the existing City of Parksville intake in the interim. A formal change of works application will trigger a review from the Province and DFO.

DFO preference is to have the intake location as far downstream.

VIHA preference is to have the intake as far upstream away from potential risks.



Change of Works Application



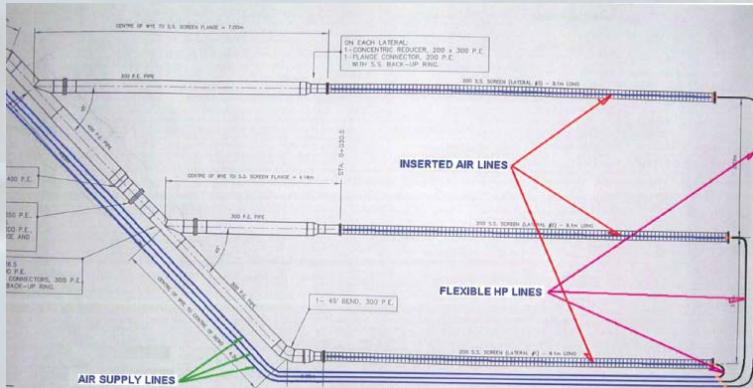
Existing intake type and location is deficient



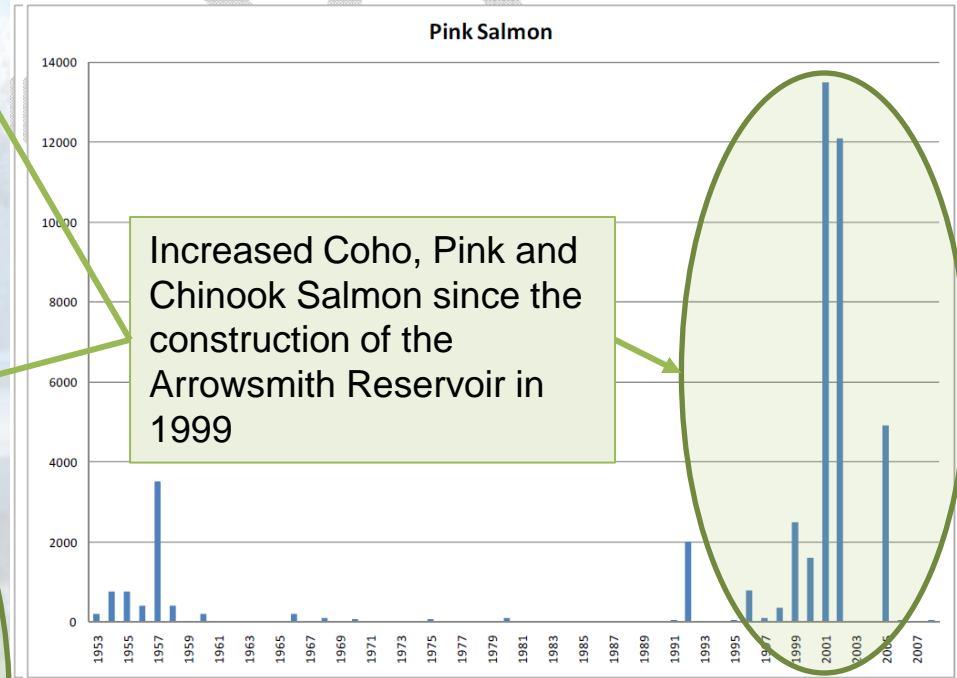
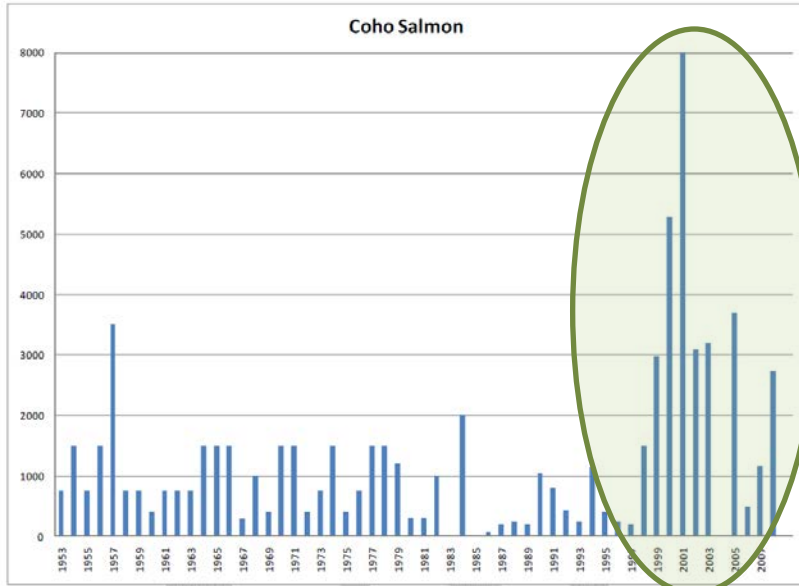
Frequent costly in-stream maintenance is required



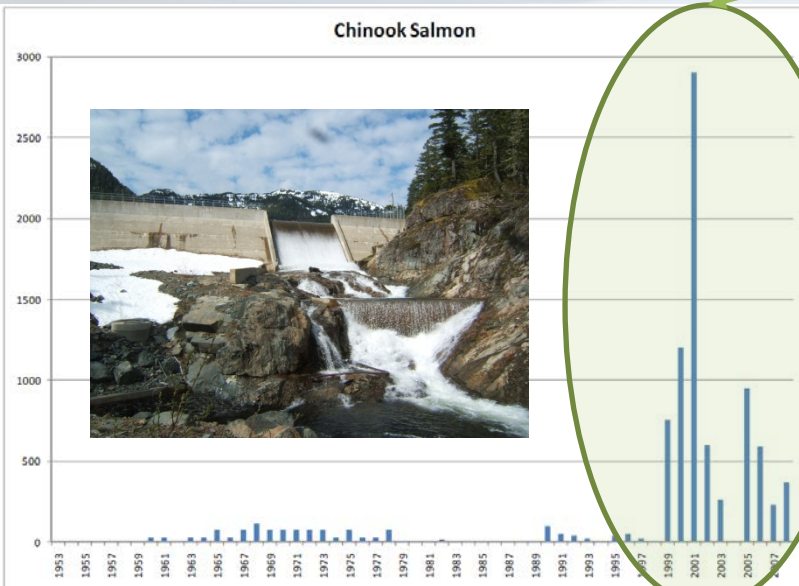
Located in Flood Plain



Change of Works Application



Increased Coho, Pink and Chinook Salmon since the construction of the Arrowsmith Reservoir in 1999



Source: Draft Report V1.0 Englishman River Instream Flow Study – Background Data Review. Prepared from DFO by Ecofish Research Ltd.

DFO Salmon escapement estimates – 1953 - 2008

Change of Works Application

Formal approval of the new intake location and the required modification of the Operation Rule (to be covered under a separate submission) would also trigger the cancellation of the City of Parksville Water Licences. The Water Licences belonging to the City of Parksville in favour of a revised Operation Rule and Relocation of Works permit. The water licenses are:

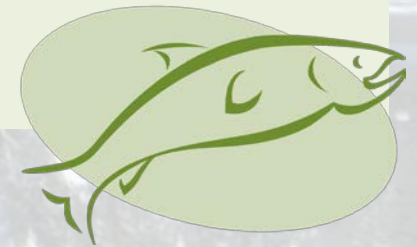
C022058 – City of Parksville Waterworks = 758 m³/day

C023297 – City of Parksville Waterworks = 189 m³/day

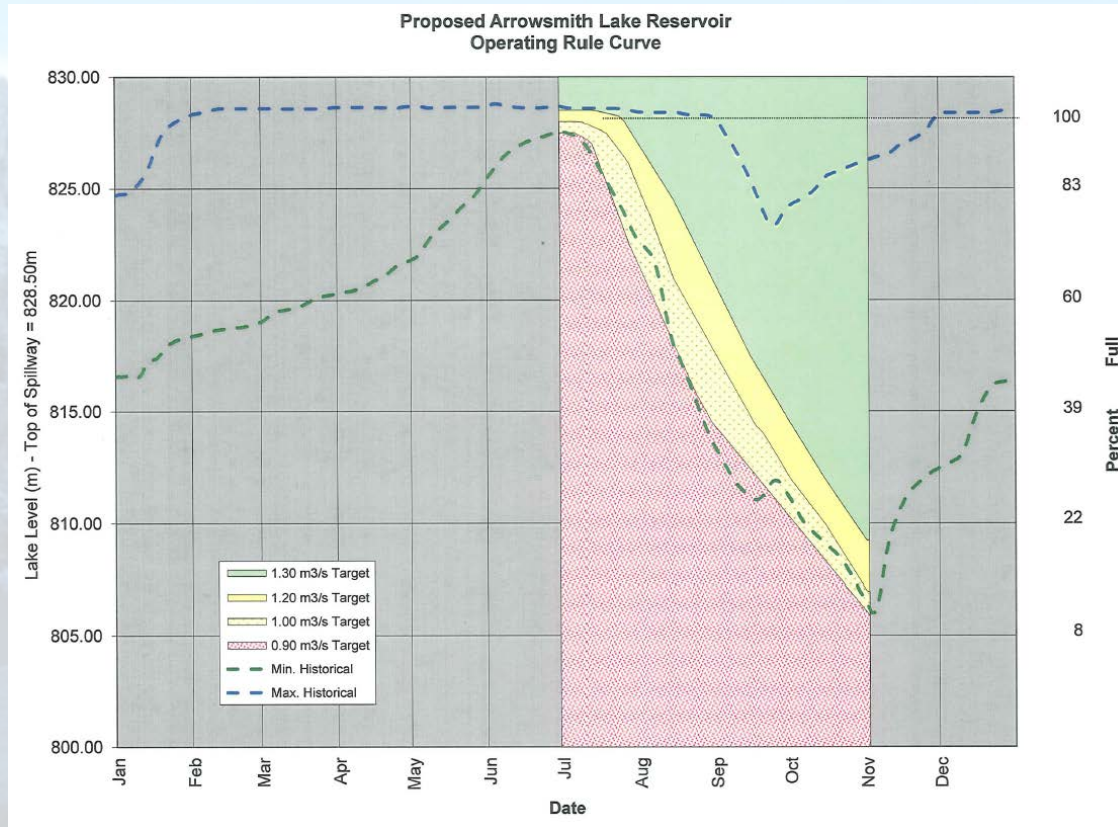
C026692 – City of Parksville Waterworks = 3,785 m³/day

Total: 4,732 m³/day

Results in: **872 US gallons per minute**
– available for fisheries purposes



Change of Works Application



A more efficient Operating Rule Curve would allow for better management of water supply for both fisheries and consumers

With the Change of Works application and our continued effort to develop sustainable solutions for future water supply, we hope to continue to promote a partnership committee with DFO, MoE and AWS / ERWS staff in an effort to determine appropriate reservoir releases on an annual basis to meet all conditions.



*An environmentally
sensitive use of water to
improve fish habitat and
domestic water supply.*

Englishman River Program Status Update

THANK YOU....

www.arrowsmithwaterservice.ca